

Решения / Solutions / Soluciones

(описание позиций / position description / descripción de las posiciones)



СКАЛЬНЫЙ ЛАБИРИНТ *The Rock Labyrinth*

*Точное ориентирование
на скальном рельефе
Precision orienteering
on rocks*

15 ноября **November 15th**
2020 **2020**



**ПЕТРОГРАДСКИЙ
КЛУБ ТУРИСТОВ**

Carabin.Ru

Онлайн **Online**
Тренировка **Training**

Zero-толерантность / Zero tolerance / Zero tolerancia: 1 m, 45 °.

Количество задач / Number of tasks / Número de retos: 50.

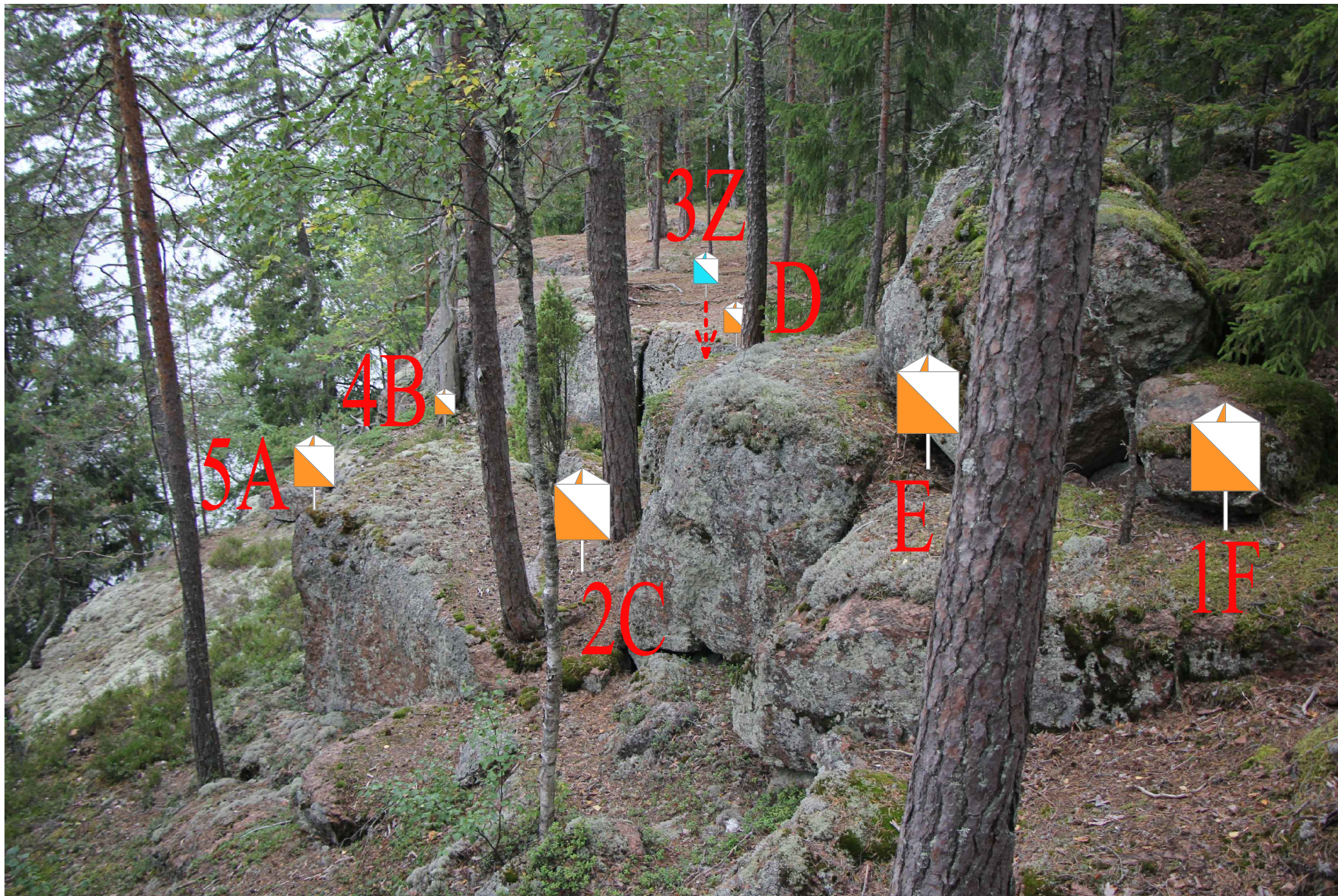
Тайм-КП / Time control / Punto cronometrado: 3 задачи / tasks / retos.

Петроградский клуб туристов (Россия, Санкт-Петербург)

Petrogradsky Tourist Club (Russia, St. Petersburg)

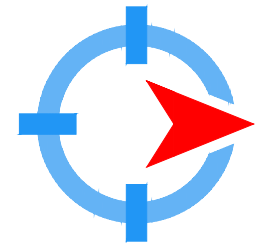
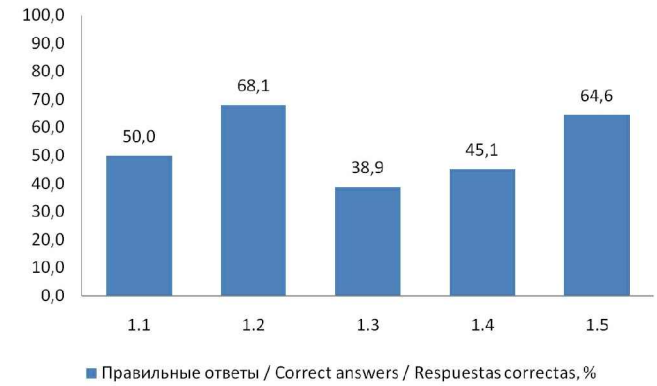
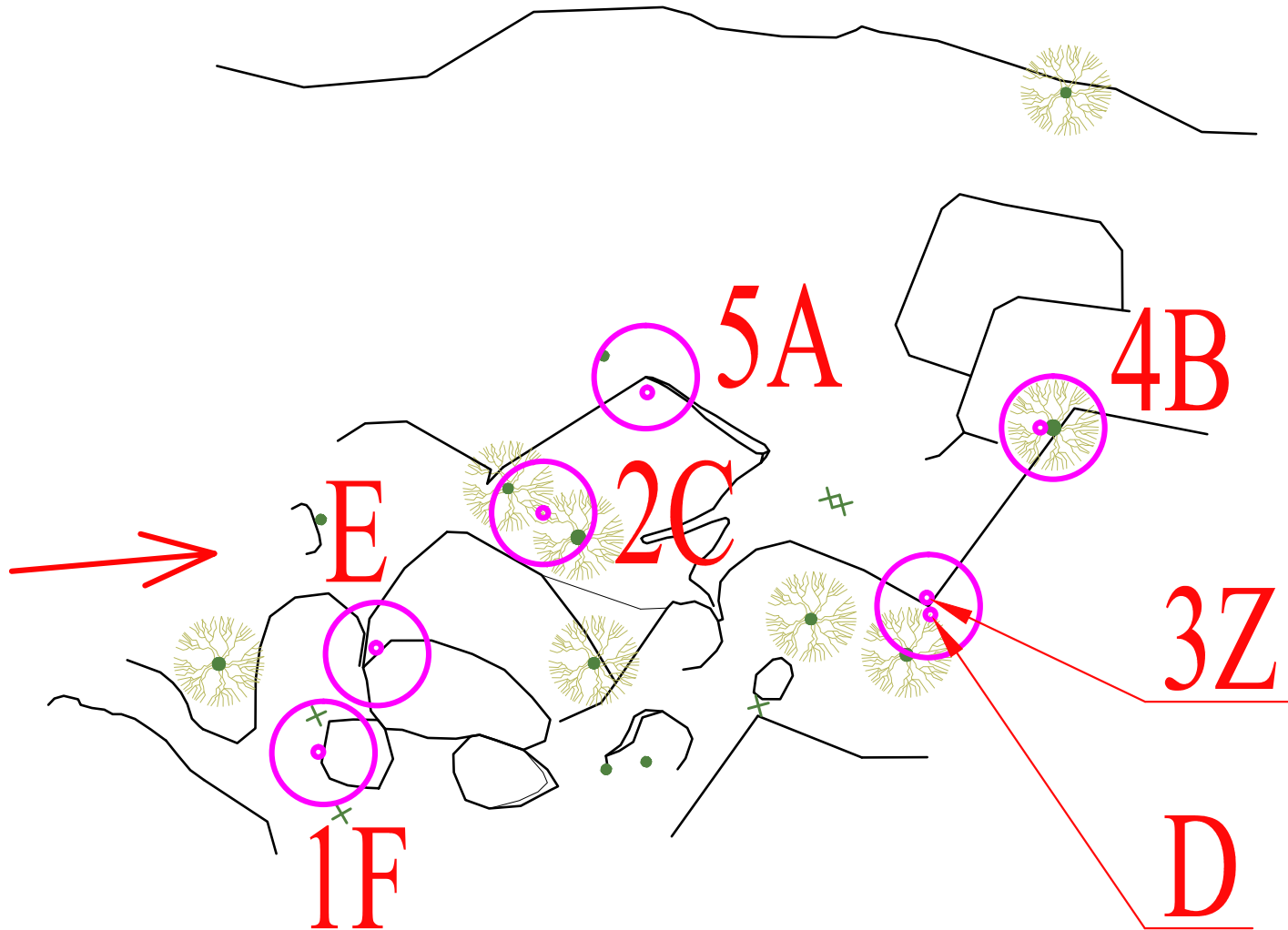
Club de Turismo Petrogradsky (Rusia, San Petersburgo)

СТАНЦИЯ 1 / STATION 1 / ESTACIÓN 1:



СТАНЦИЯ 1 / STATION 1 / ESTACIÓN 1:

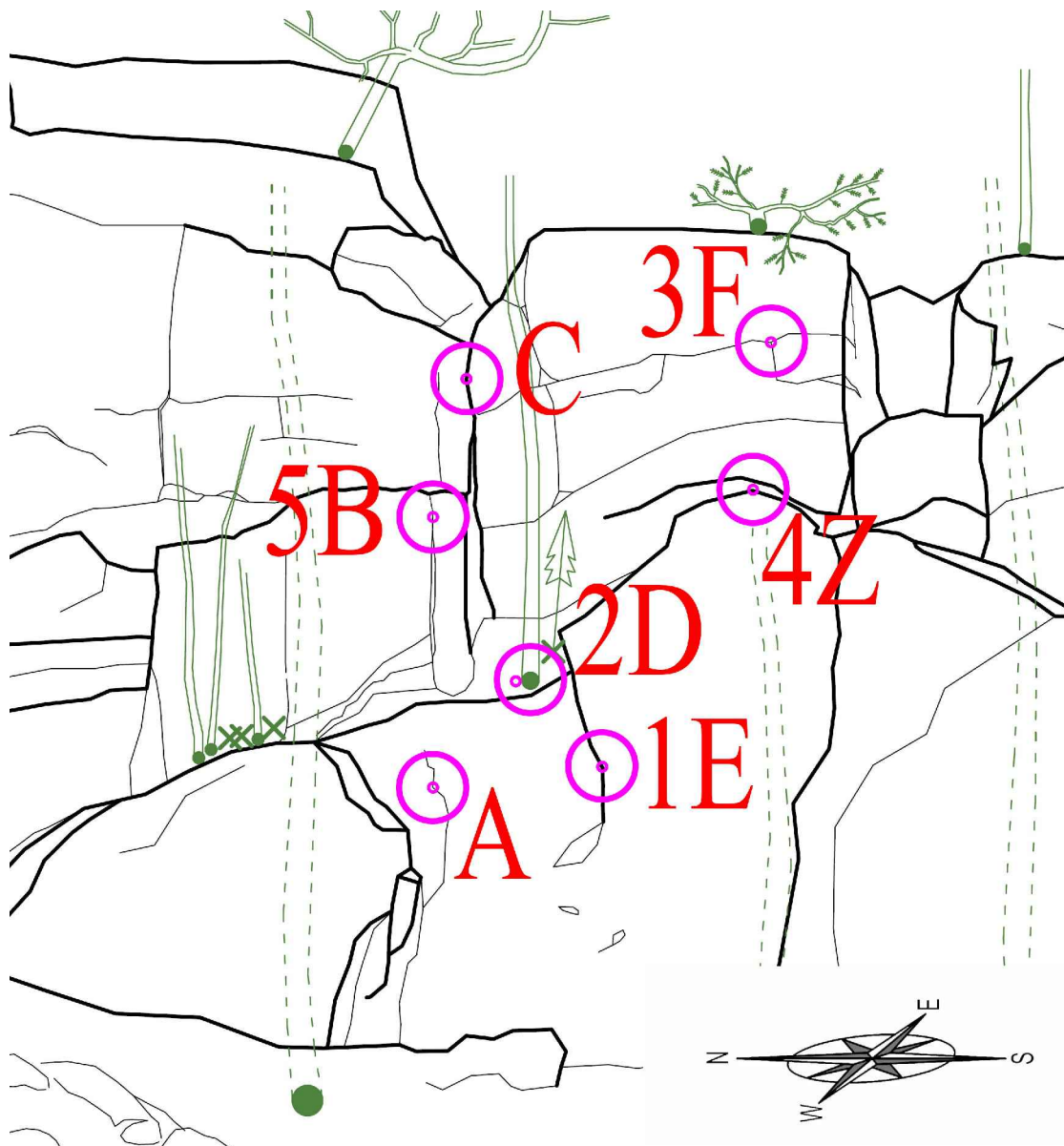
1.1	A-F	▲		○	↑	F
1.2	A-F	△	△	≡	↑	C
1.3	A-F	▯		➤	↑	Z
1.4	A-F	△		○	↑	B
1.5	A-F	⤴		◀	↑	A



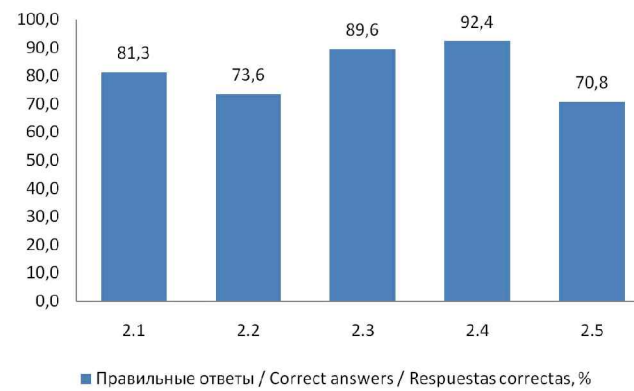
СТАНЦИЯ 2 / STATION 2 / ESTACIÓN 2:



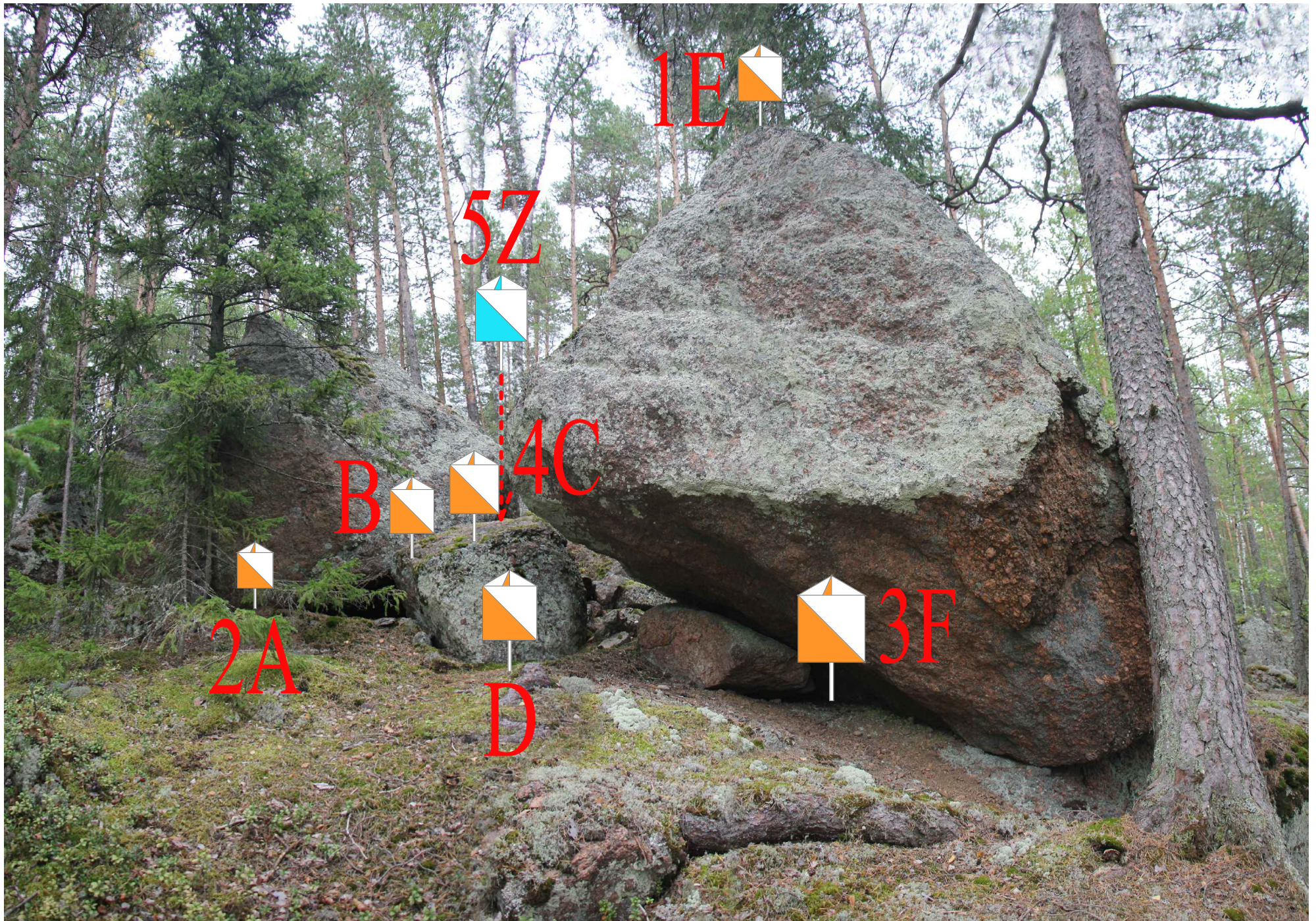
СТАНЦИЯ 2 / STATION 2 / ESTACIÓN 2:



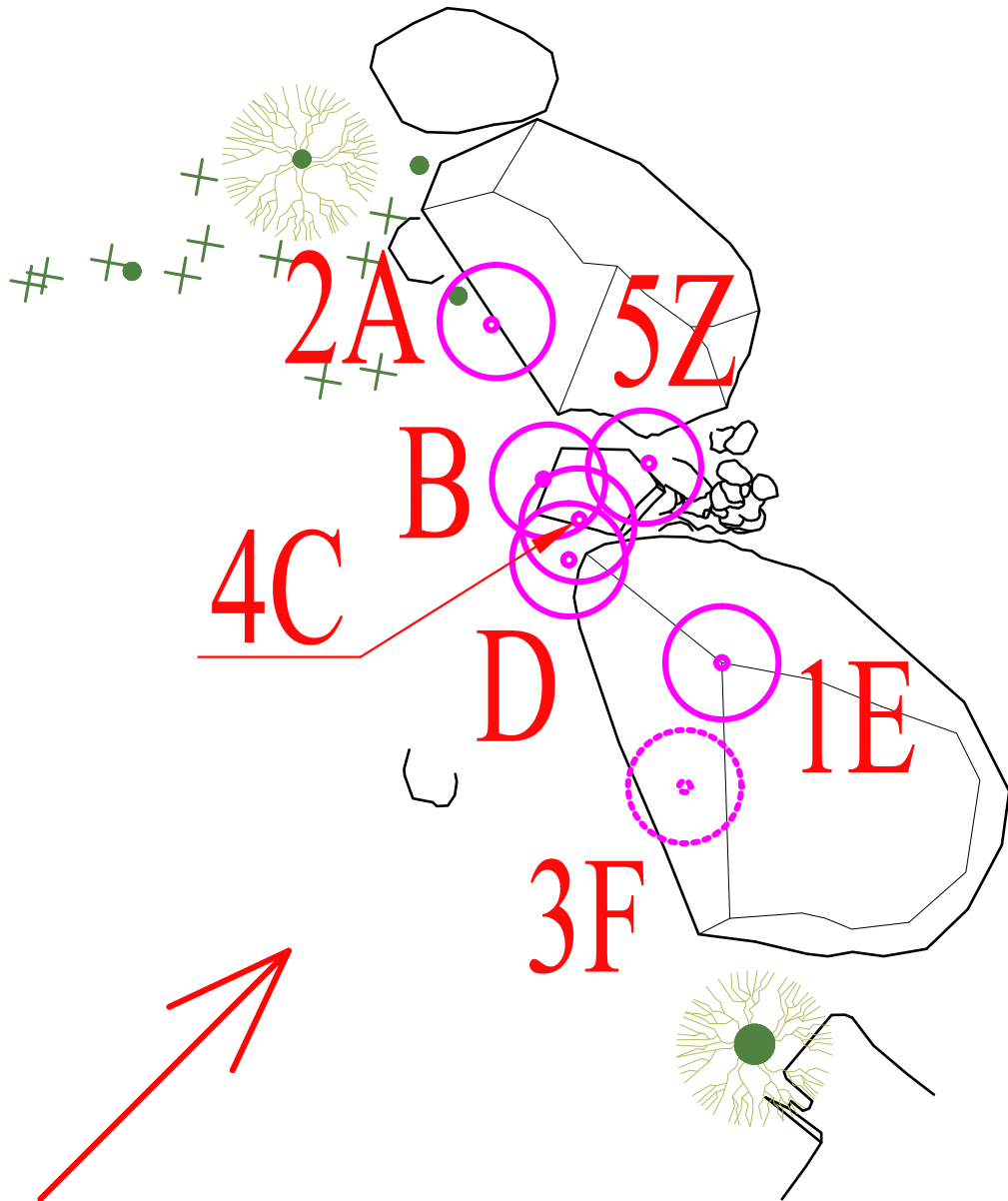
2.1	A-F	⌌	<	→	E
2.2	A-F	⤴	⊙	→	D
2.3	A-F	⌌	⌌	↘	F
2.4	A-F	⌌	⊙	→	Z
2.5	A-F	⌌		→	B



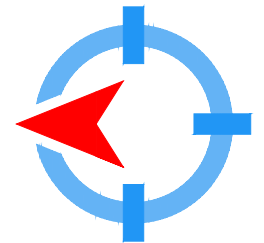
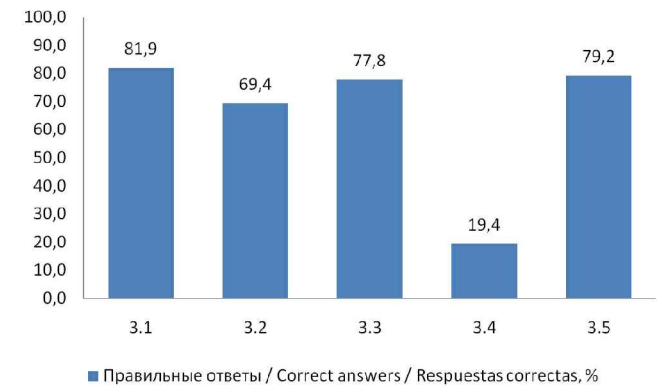
СТАНЦИЯ 3 / STATION 3 / ESTACIÓN 3:



СТАНЦИЯ 3 / STATION 3 / ESTACIÓN 3:



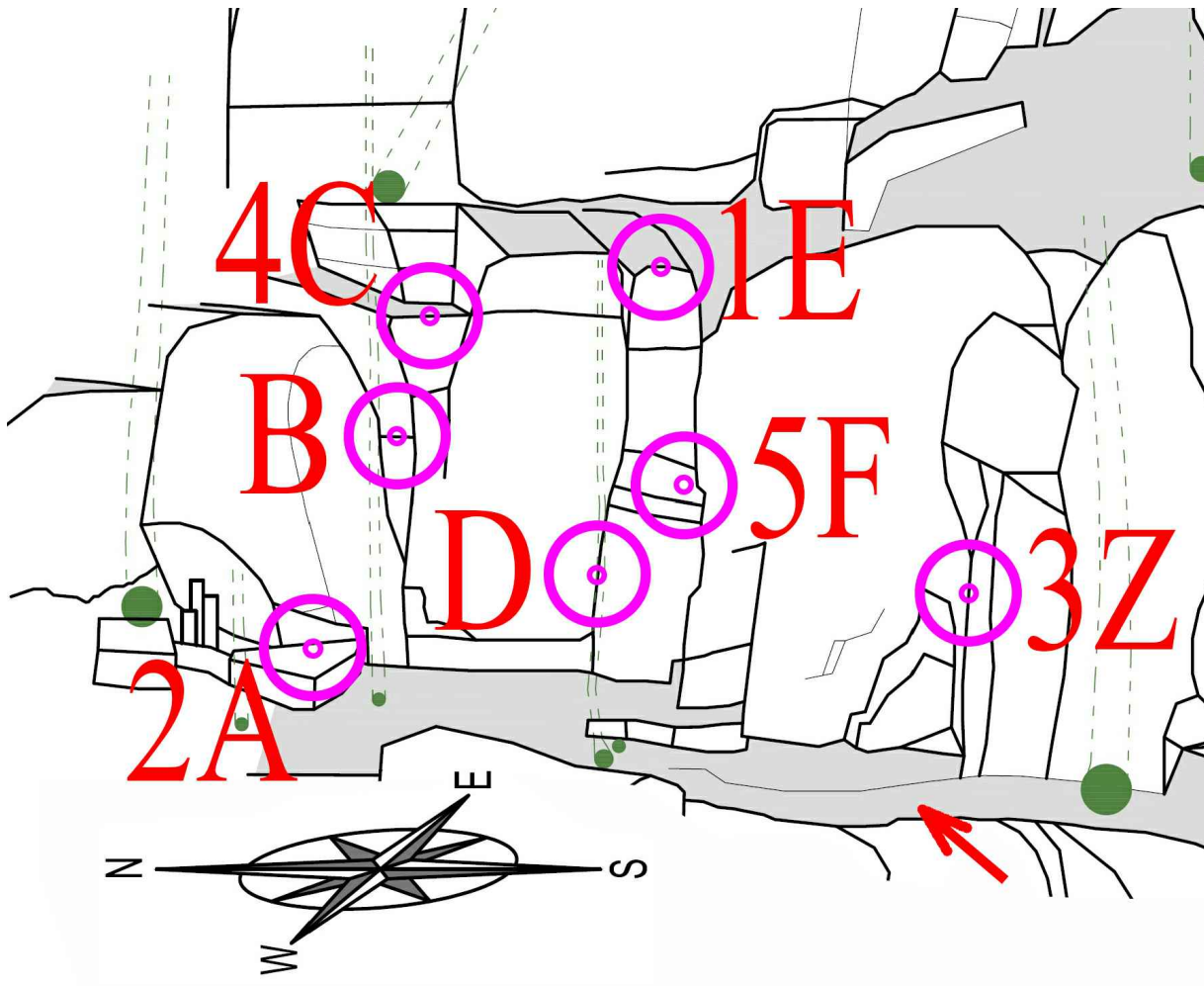
3.1	A-F	▲			▣	↘	E
3.2	A-F	▲			○	↘	A
3.3	A-F	▲			▣	↘	F
3.4	A-F	▲			○	↘	C
3.5	A-F	▲			○	↘	Z



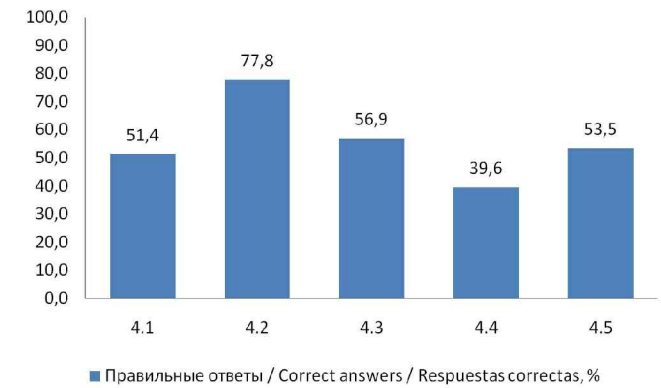
СТАНЦИЯ 4 / STATION 4 / ESTACIÓN 4:



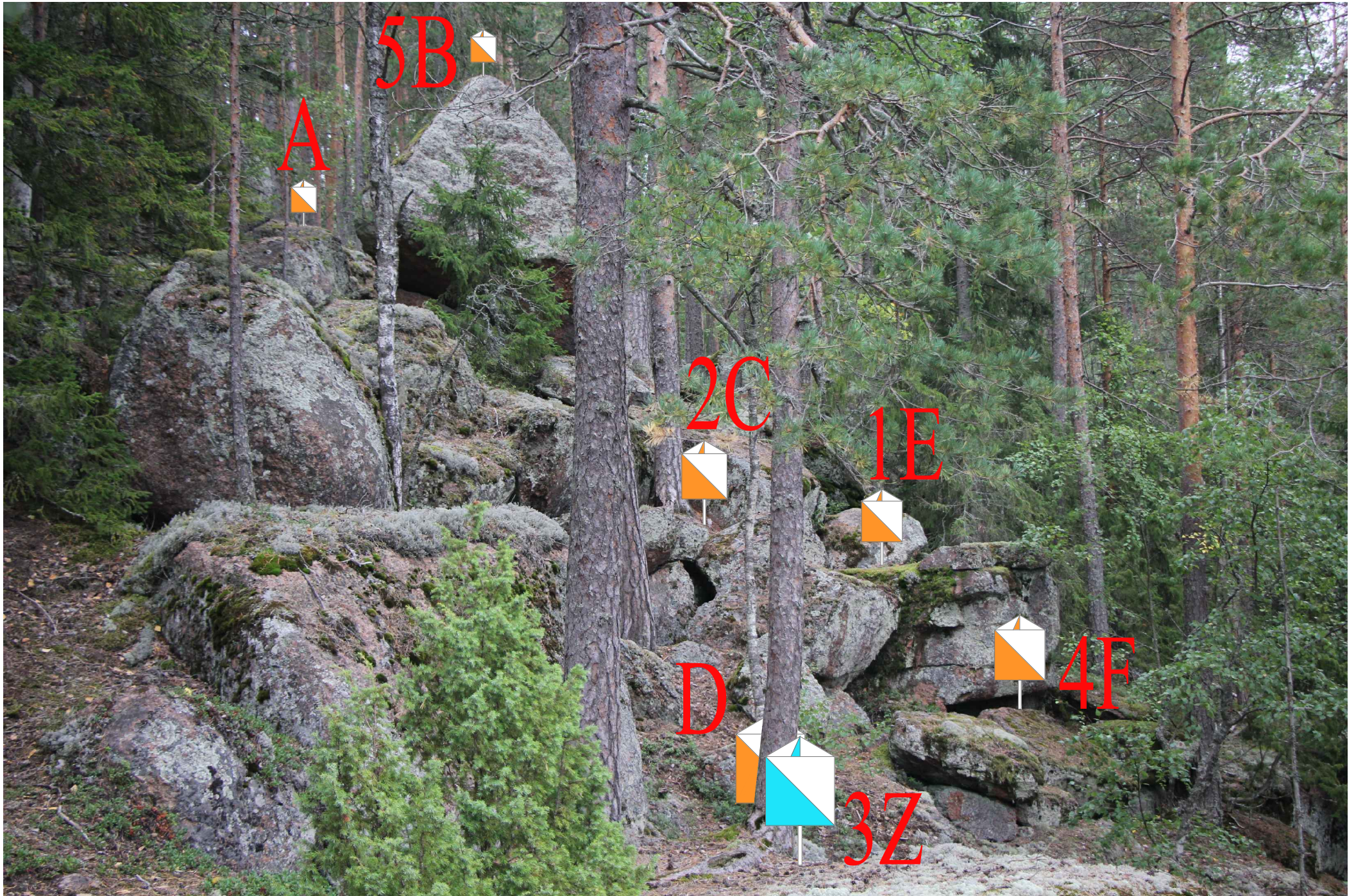
СТАНЦИЯ 4 / STATION 4 / ESTACIÓN 4:



4.1	A-F	⤴		⊙	↗	E
4.2	A-F	▲			↗	A
4.3	A-F	⊏			↗	Z
4.4	A-F	⤴		⊙	↗	C
4.5	A-F	⤴		⊙	↗	F

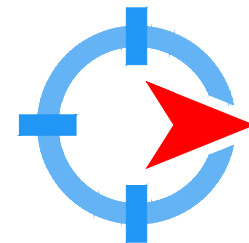
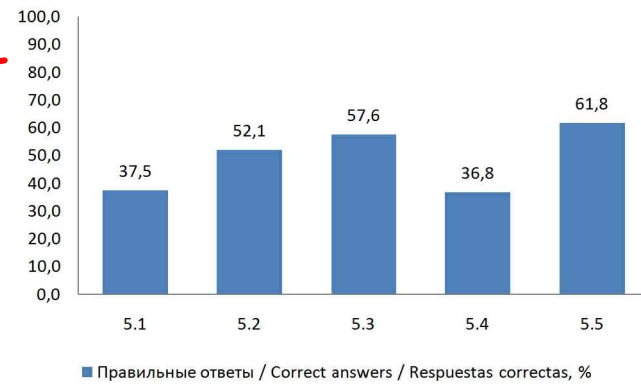
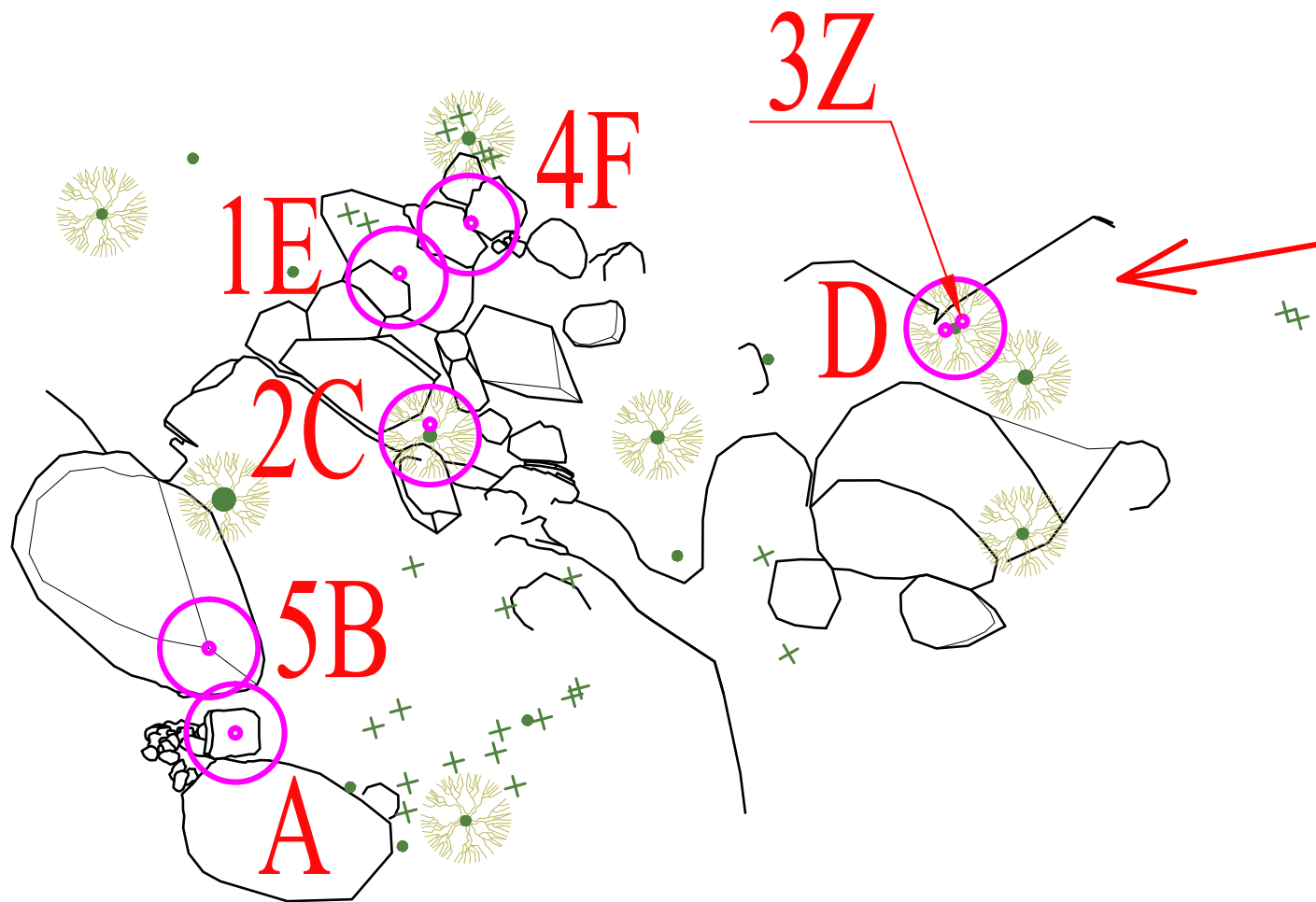


СТАНЦИЯ 5 / STATION 5 / ESTACIÓN 5:



СТАНЦИЯ 5 / STATION 5 / ESTACIÓN 5:

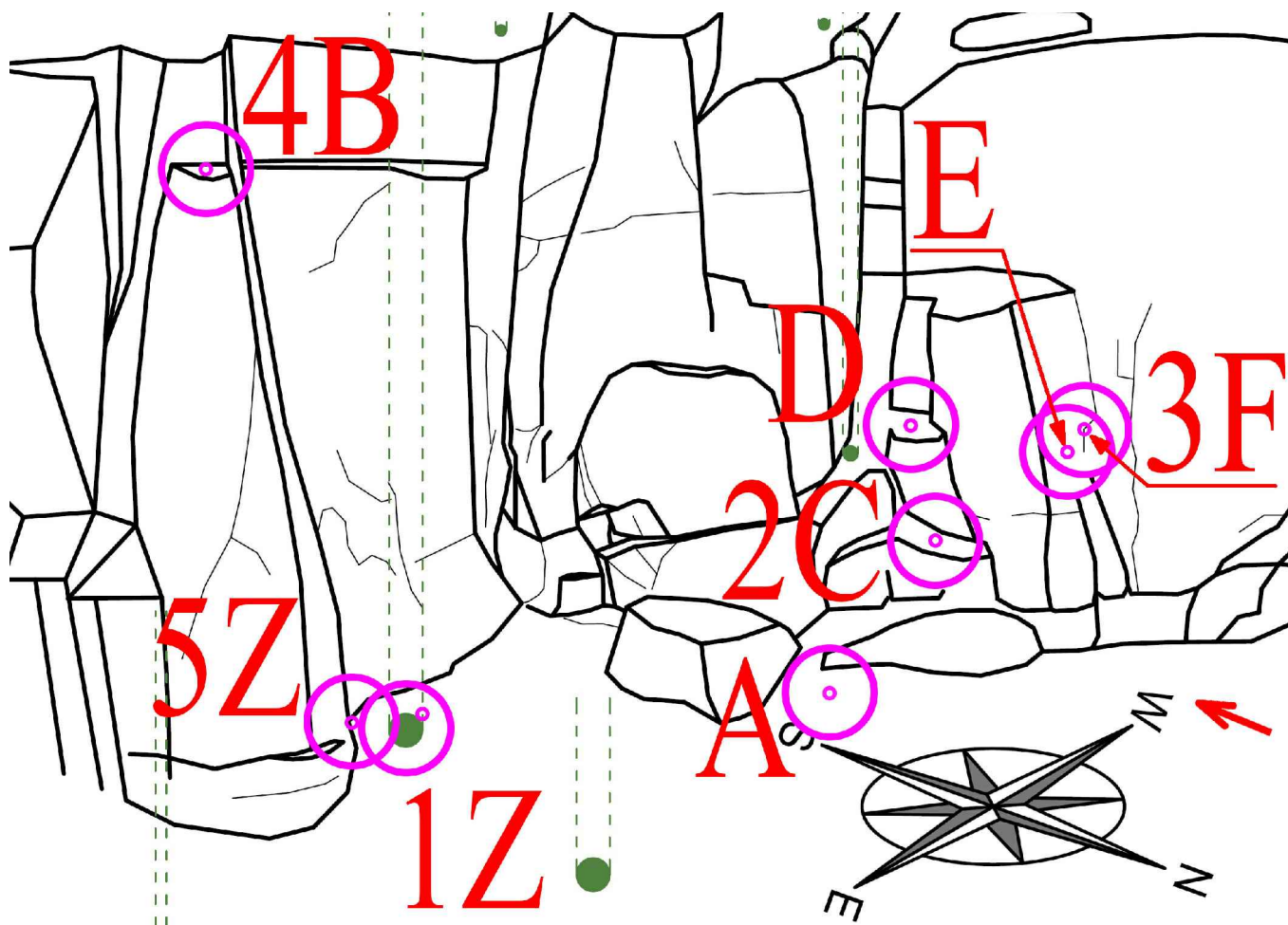
5.1	A-F	▲		○	↓	E
5.2	A-F	⤴		○	↓	C
5.3	A-F	⤴		○	↓	Z
5.4	A-F	▯▯▯		└	↓	F
5.5	A-F	▲		◡	↓	B



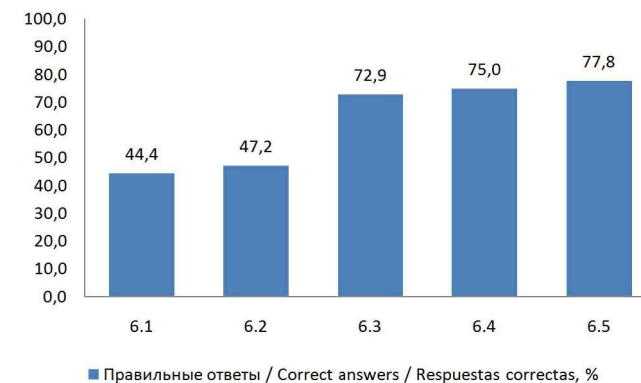
СТАНЦИЯ 6 / STATION 6 / ESTACIÓN 6:



СТАНЦИЯ 6 / STATION 6 / ESTACIÓN 6:

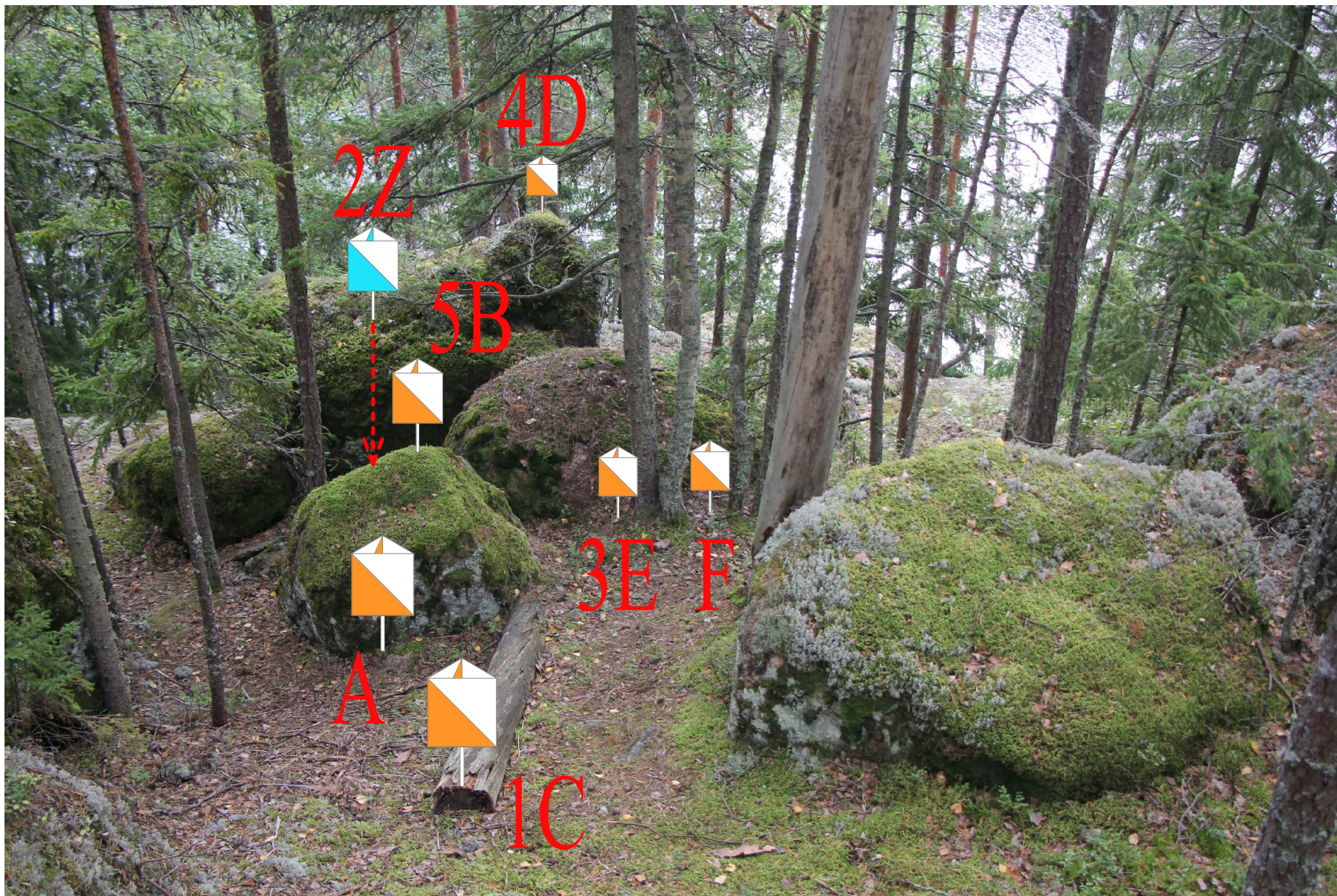


6.1	A-F	♀		○	↓	Z
6.2	A-F	⋈			↓	C
6.3	A-F	⊥	<		↓	F
6.4	A-F	⋈			↓	B
6.5	A-F	≡		⊥	↓	Z

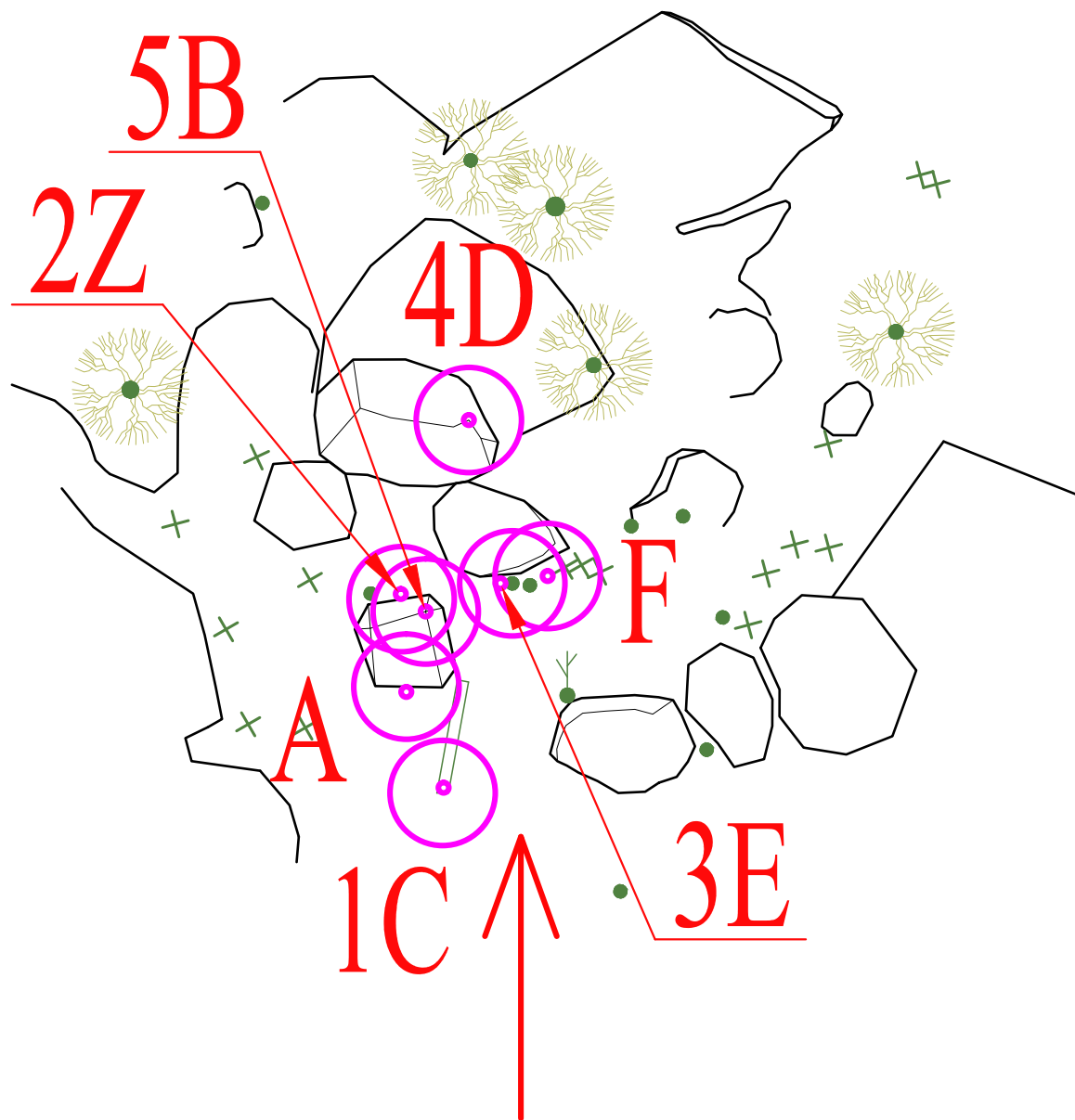


■ Правильные ответы / Correct answers / Respuestas correctas, %

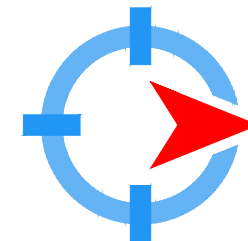
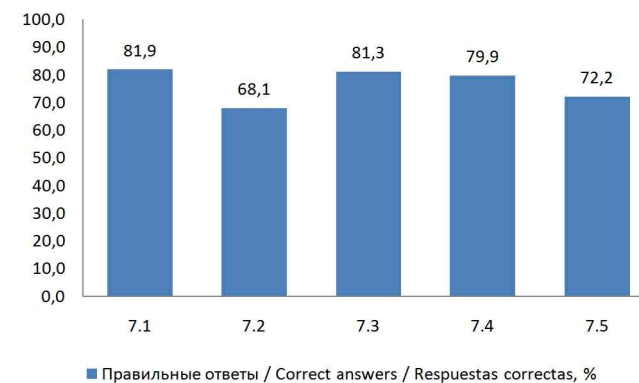
СТАНЦИЯ 7 / STATION 7 / ESTACIÓN 7:



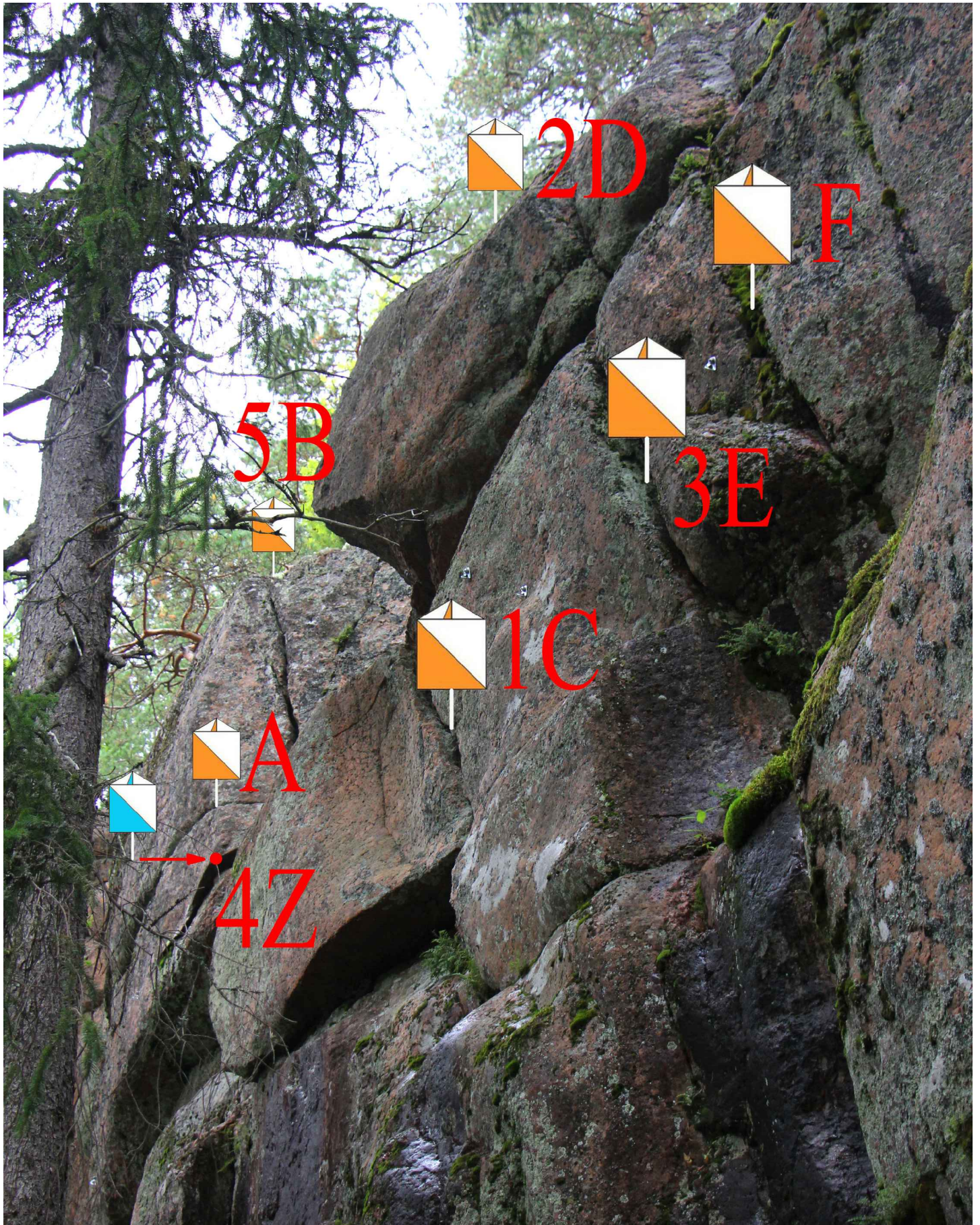
СТАНЦИЯ 7 / STATION 7 / ESTACIÓN 7:



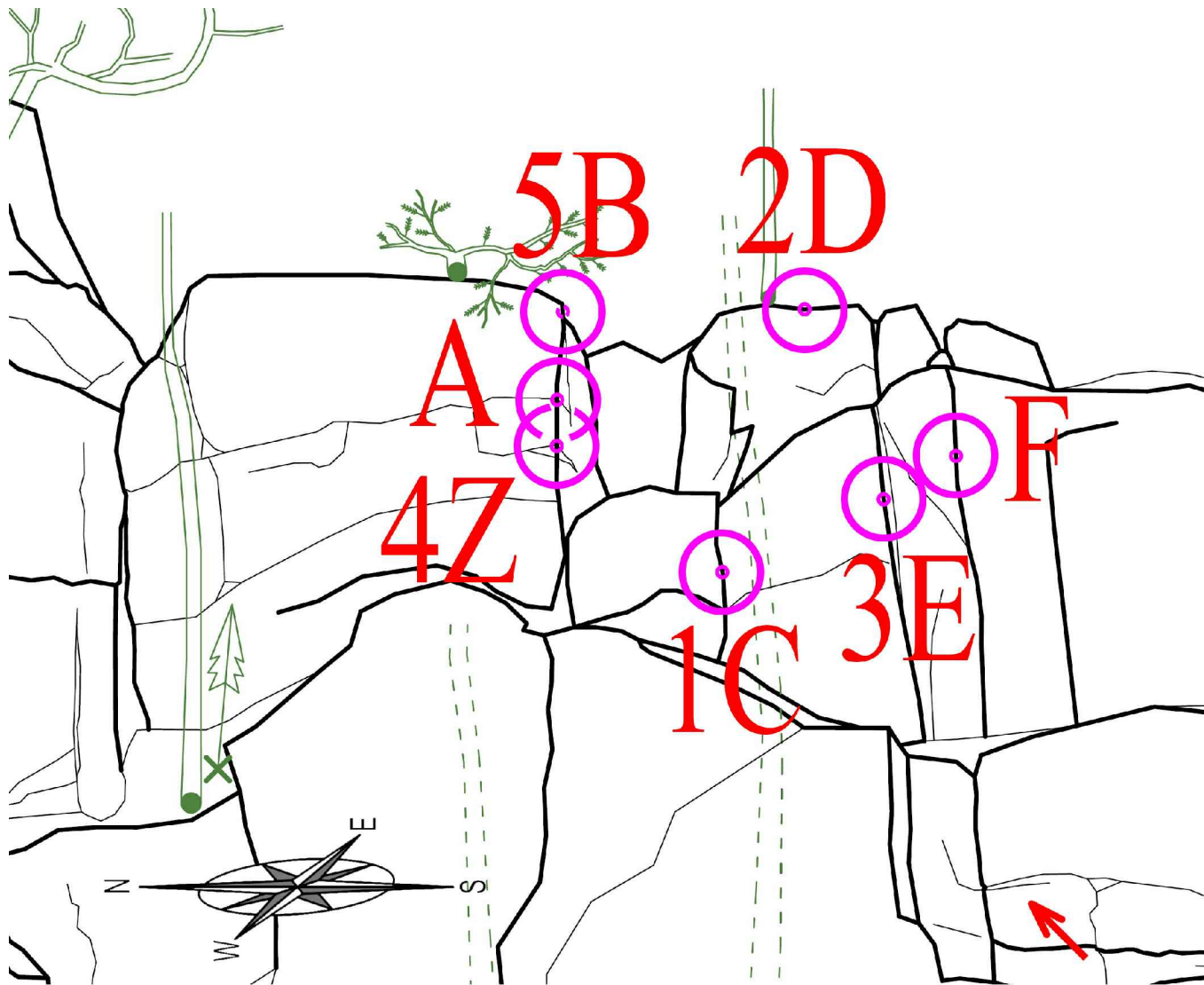
7.1	A-F	⚡	↻	—	←	C
7.2	A-F	▲		○	←	Z
7.3	A-F	↓	⚡	○	←	E
7.4	A-F	▲		⋮	←	D
7.5	A-F	▲		⋮	←	B



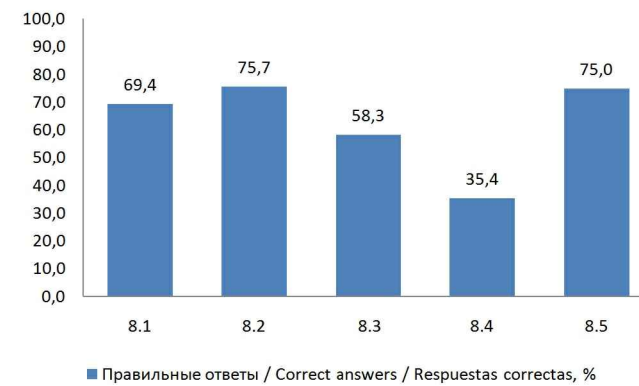
СТАНЦИЯ 8 / STATION 8 / ESTACIÓN 8:



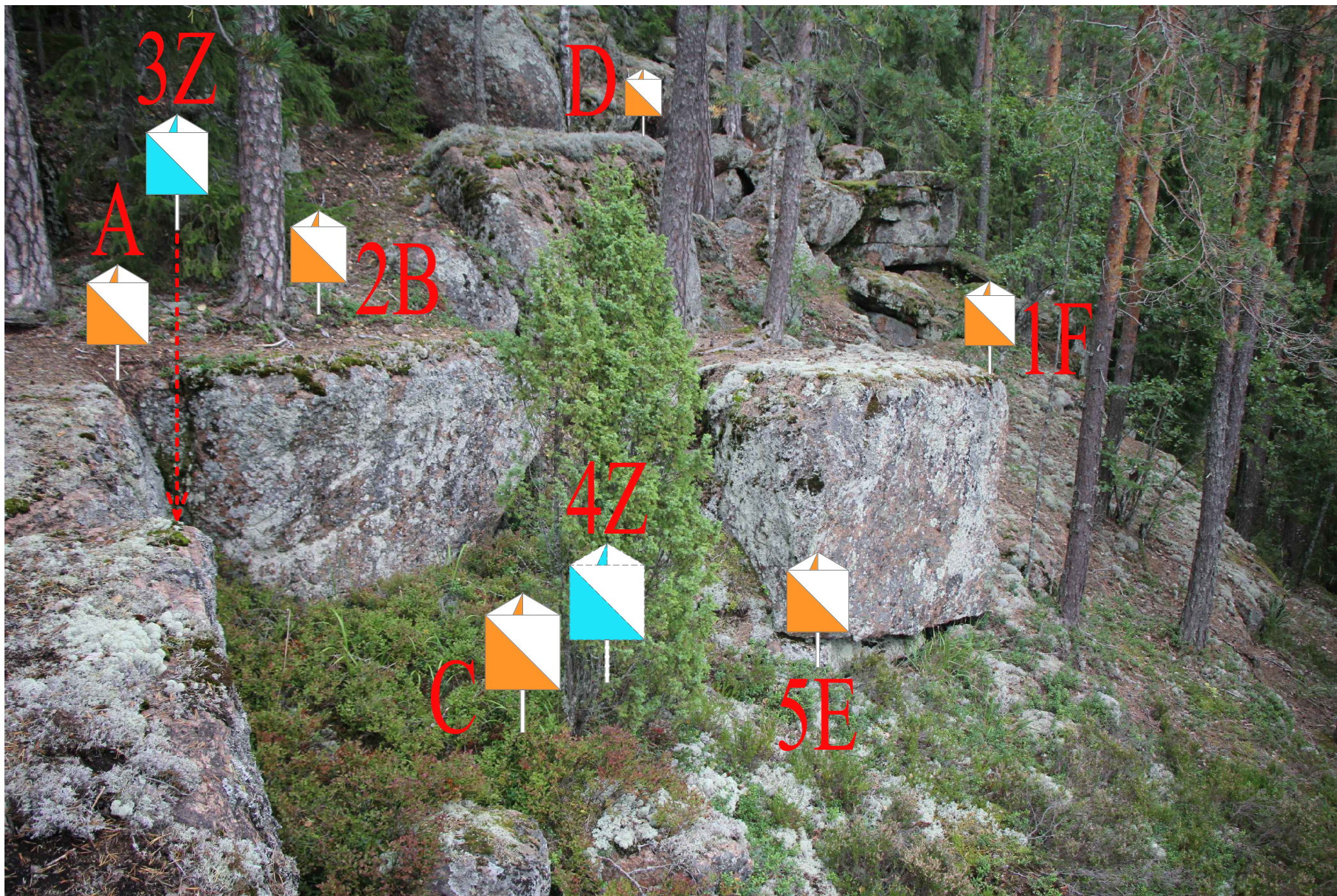
СТАНЦИЯ 8 / STATION 8 / ESTACIÓN 8:



8.1	A-F	⌌	<	↗	C
8.2	A-F	⌋		⊙	D
8.3	A-F	⌌		↗	E
8.4	A-F	⌌	<	↗	Z
8.5	A-F	⌋		⊙	B

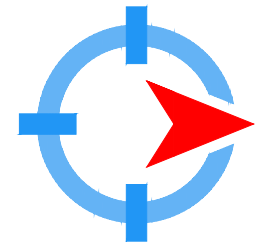
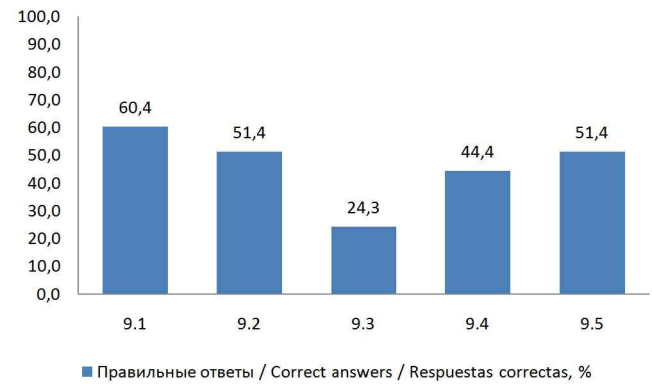
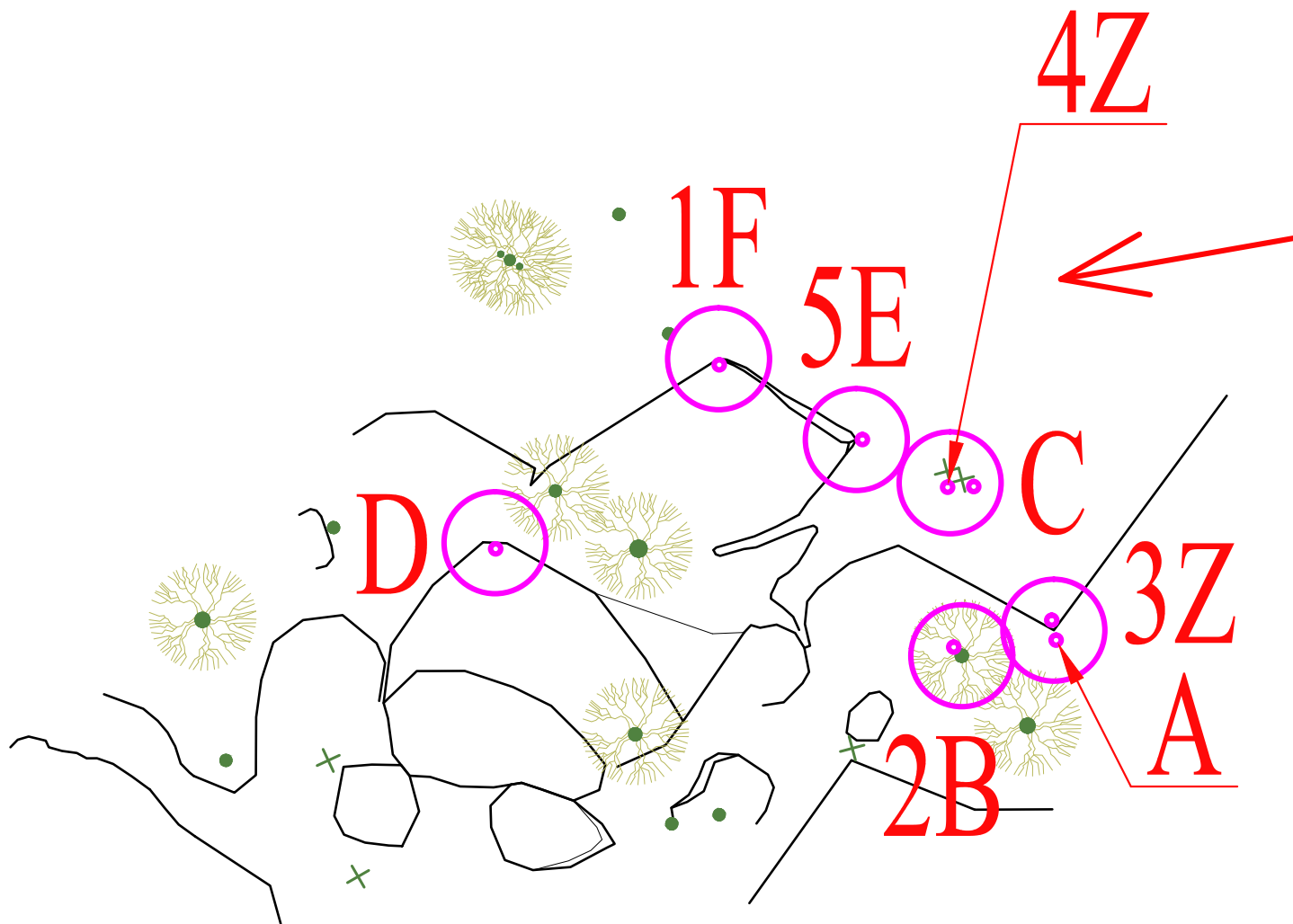


СТАНЦИЯ 9 / STATION 9 / ESTACIÓN 9:

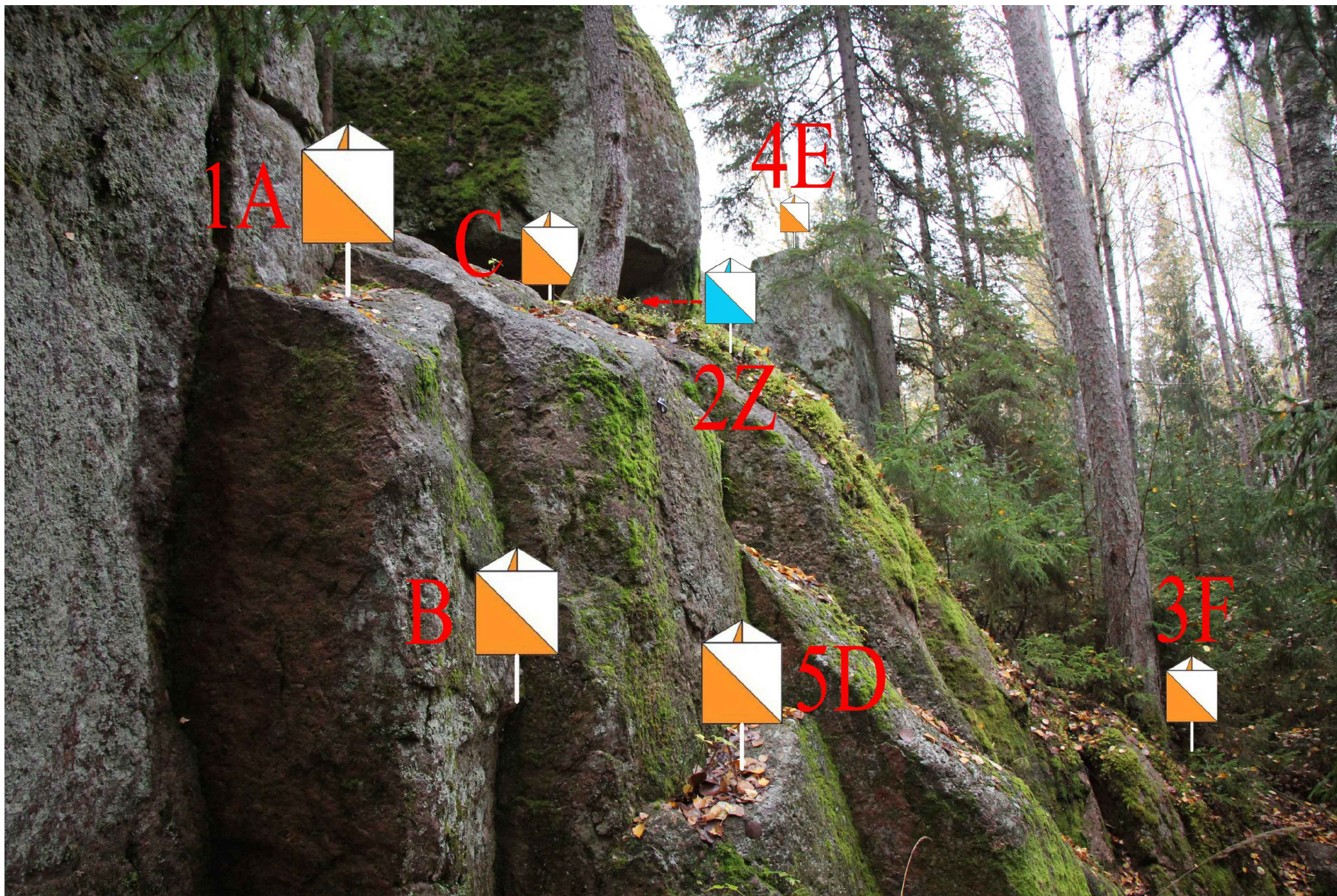


СТАНЦИЯ 9 / STATION 9 / ESTACIÓN 9:

9.1	A-F				F
9.2	A-F				B
9.3	A-F				Z
9.4	A-F				Z
9.5	A-F				E

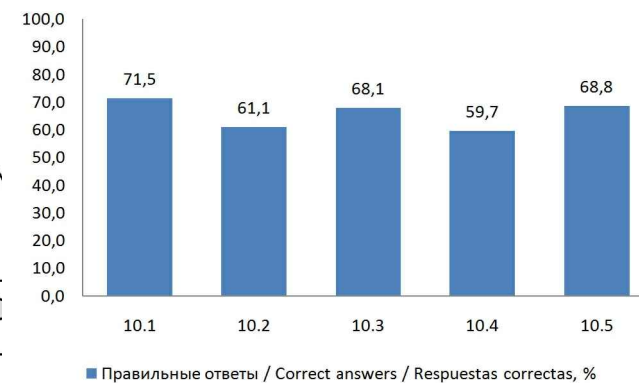
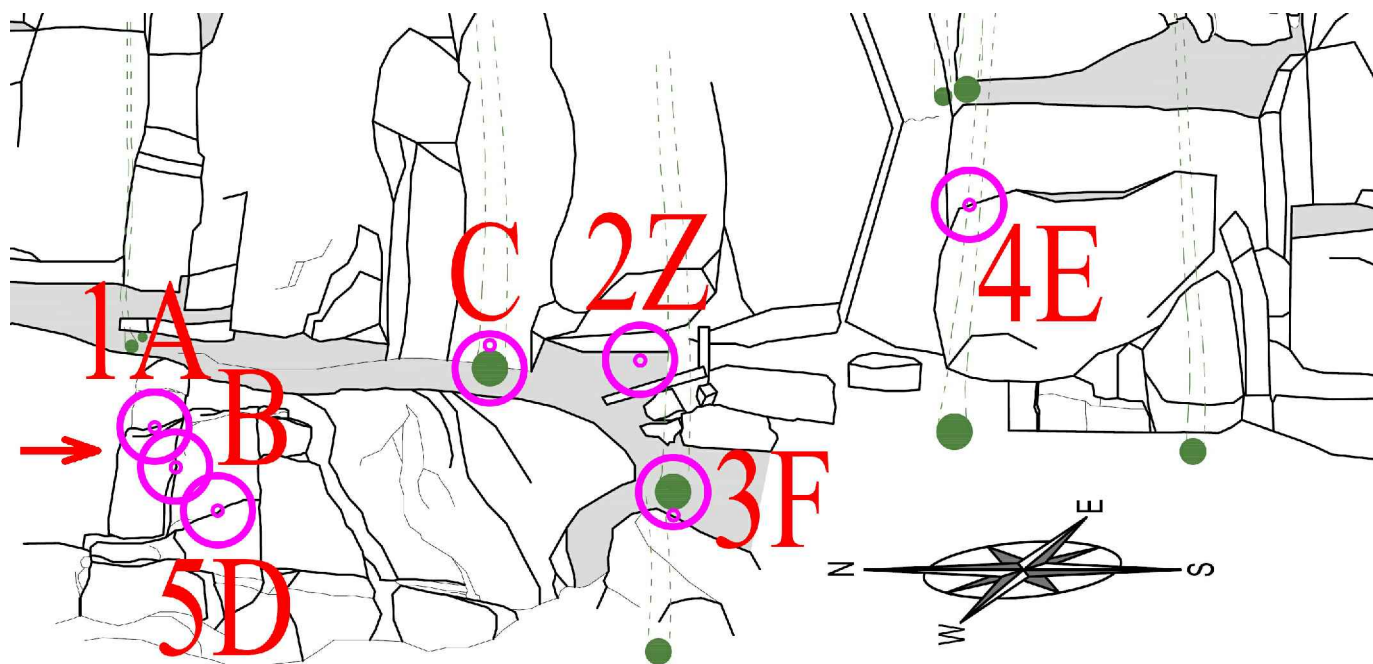


СТАНЦИЯ 10 / STATION 10 / ESTACIÓN 10:

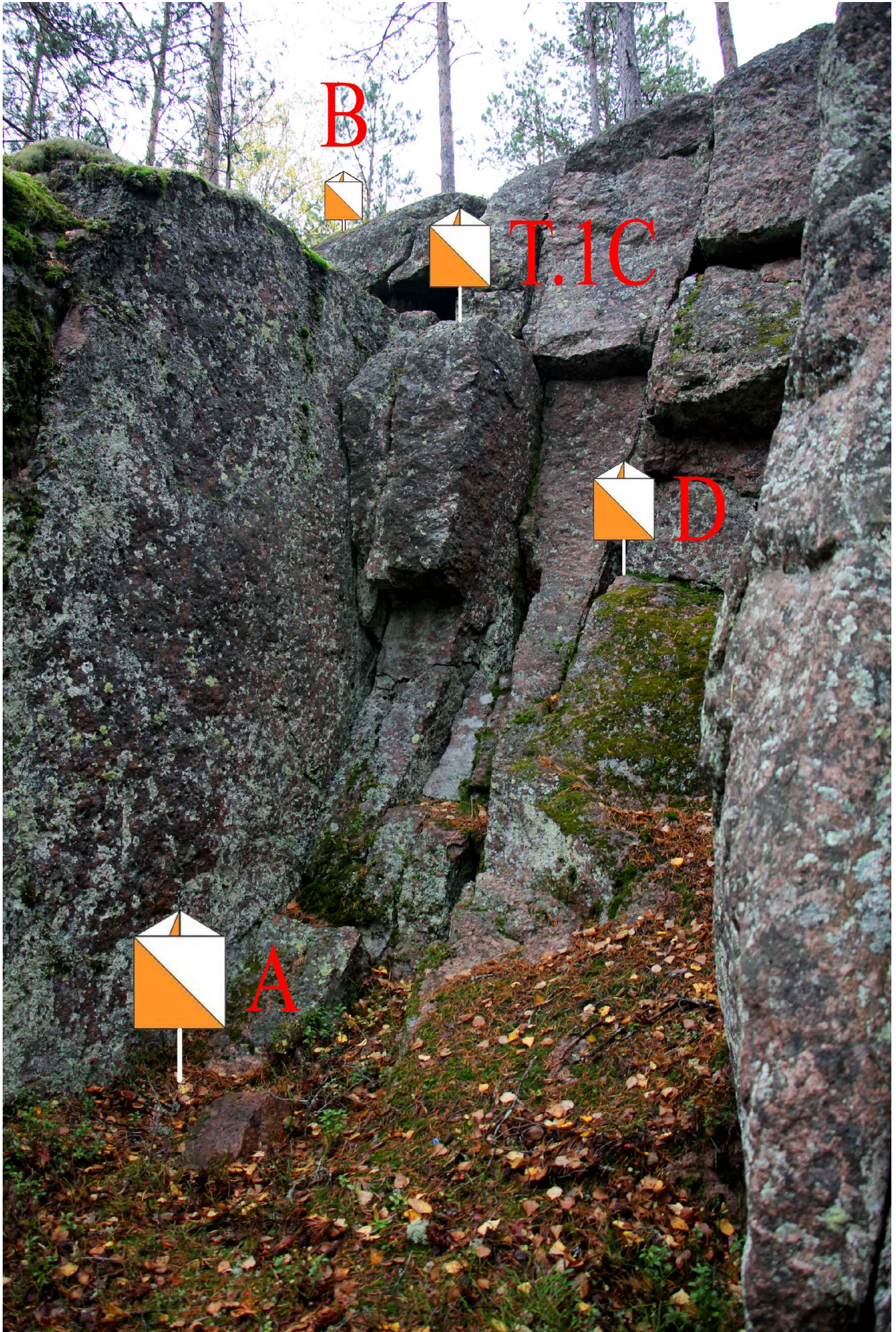


СТАНЦИЯ 10 / STATION 10 / ESTACIÓN 10:

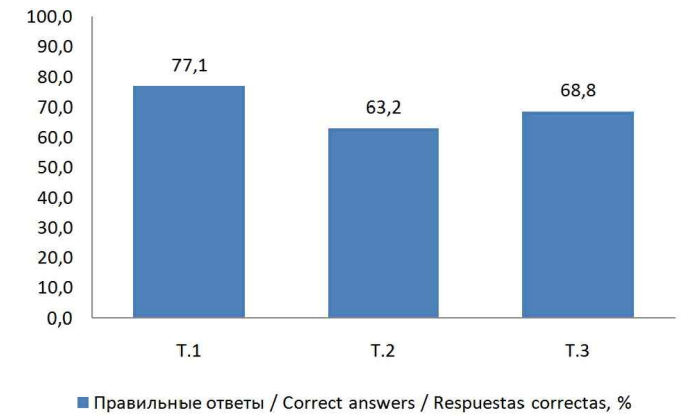
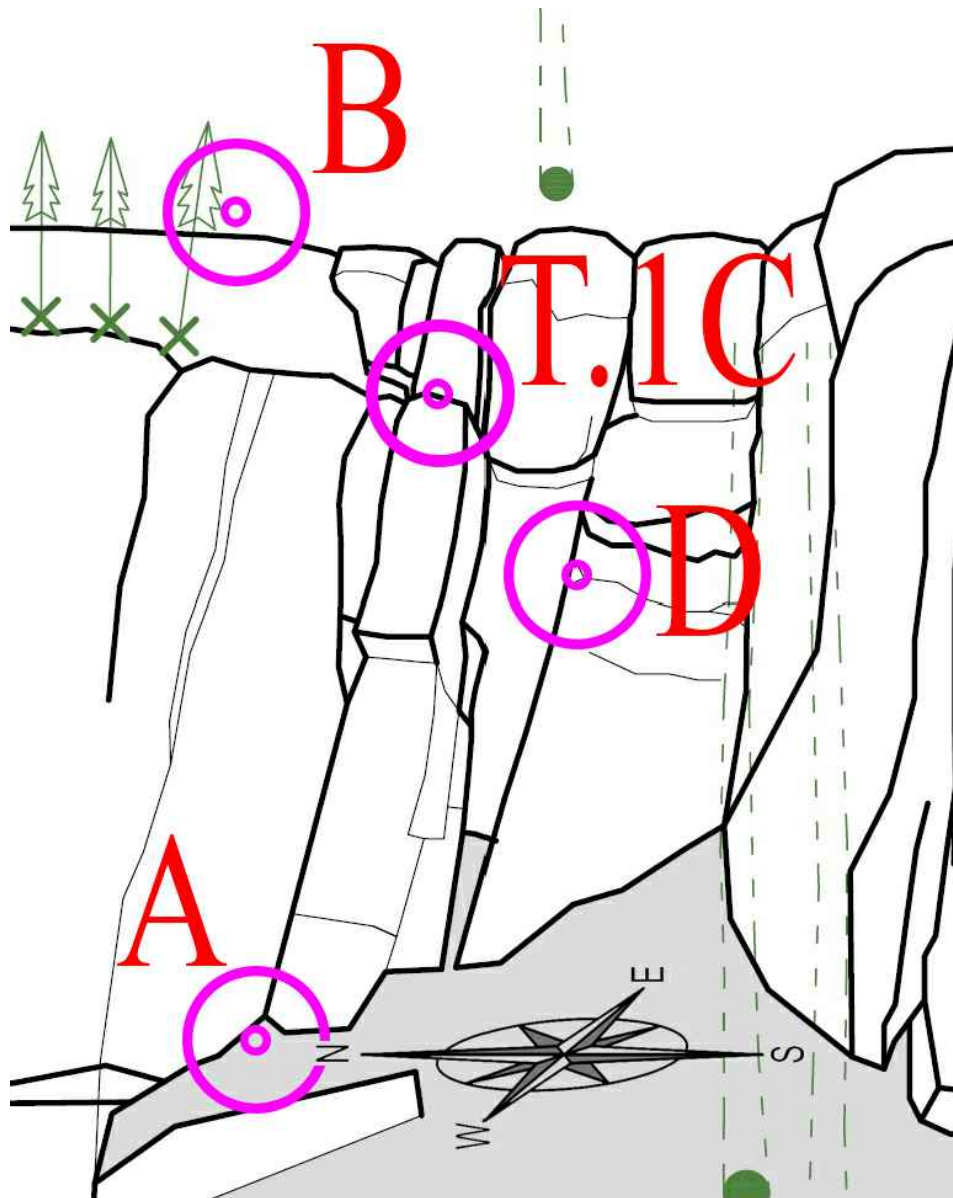
10.1 A-F	𐤁			↓	A
10.2 A-F	𐤆		○	↓	Z
10.3 A-F	𐤅		○	↓	F
10.4 A-F	𐤄		⋮	↓	E
10.5 A-F	𐤁			↓	D



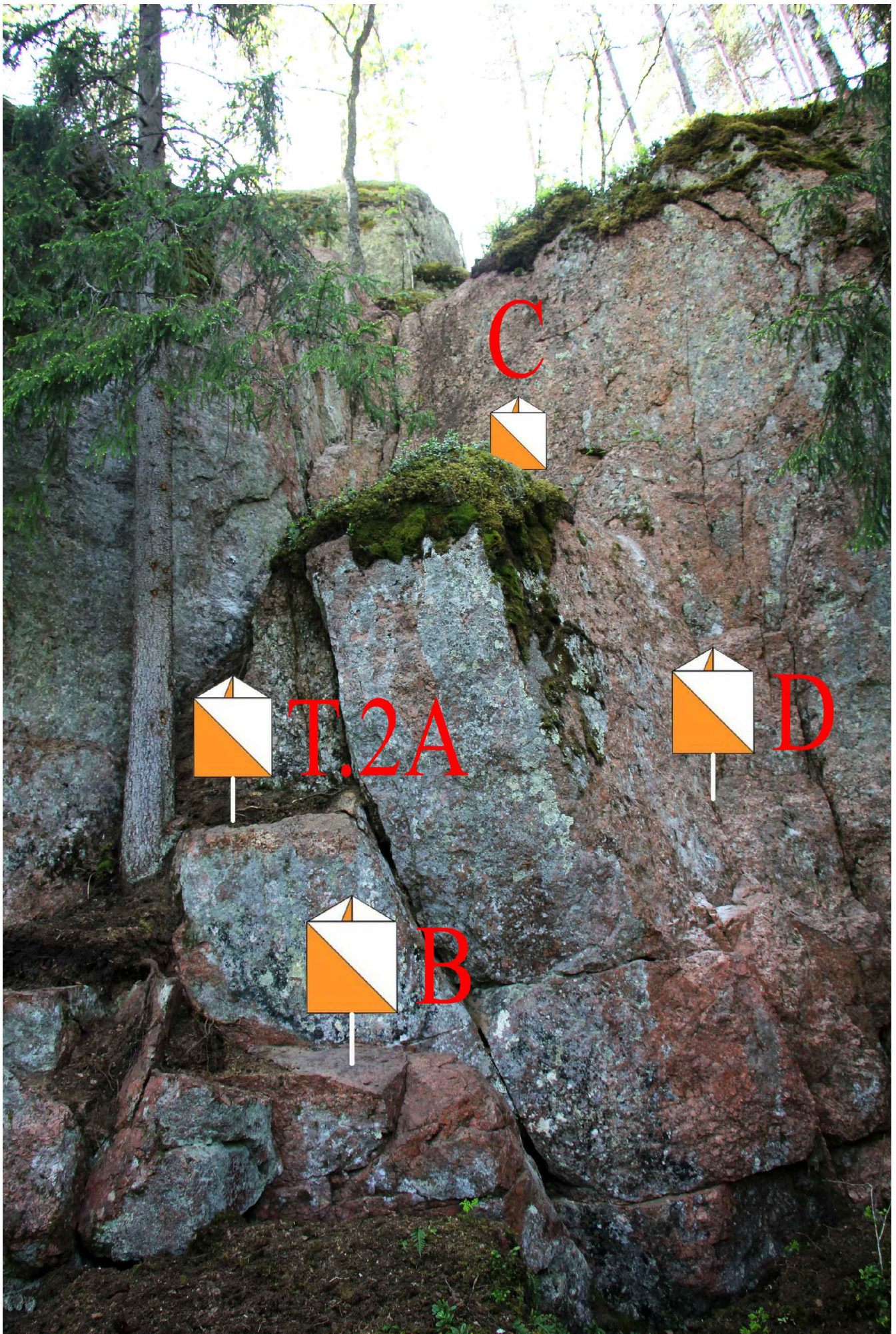
СТАНЦИЯ Т.1 / STATION T.1 / ESTACIÓN T.1:



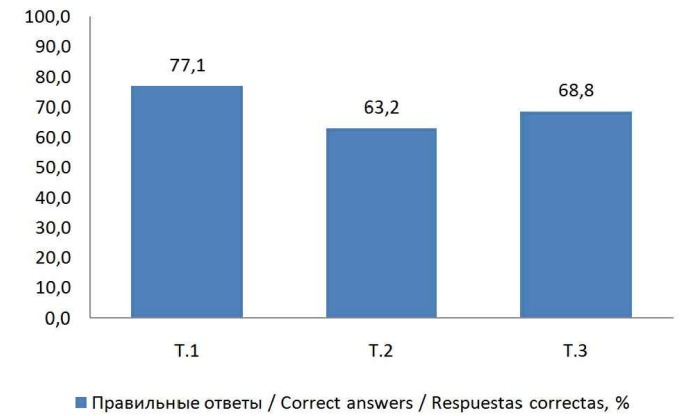
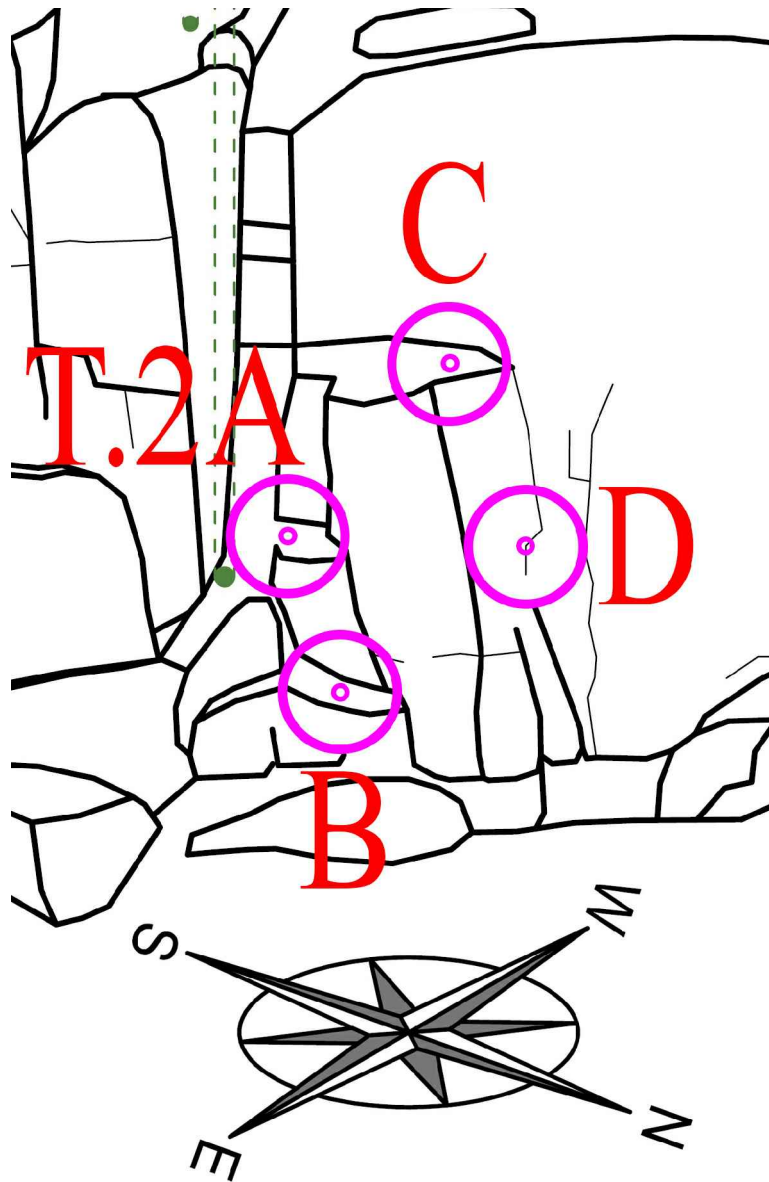
СТАНЦИЯ Т.1 / STATION T.1 / ESTACIÓN T.1:



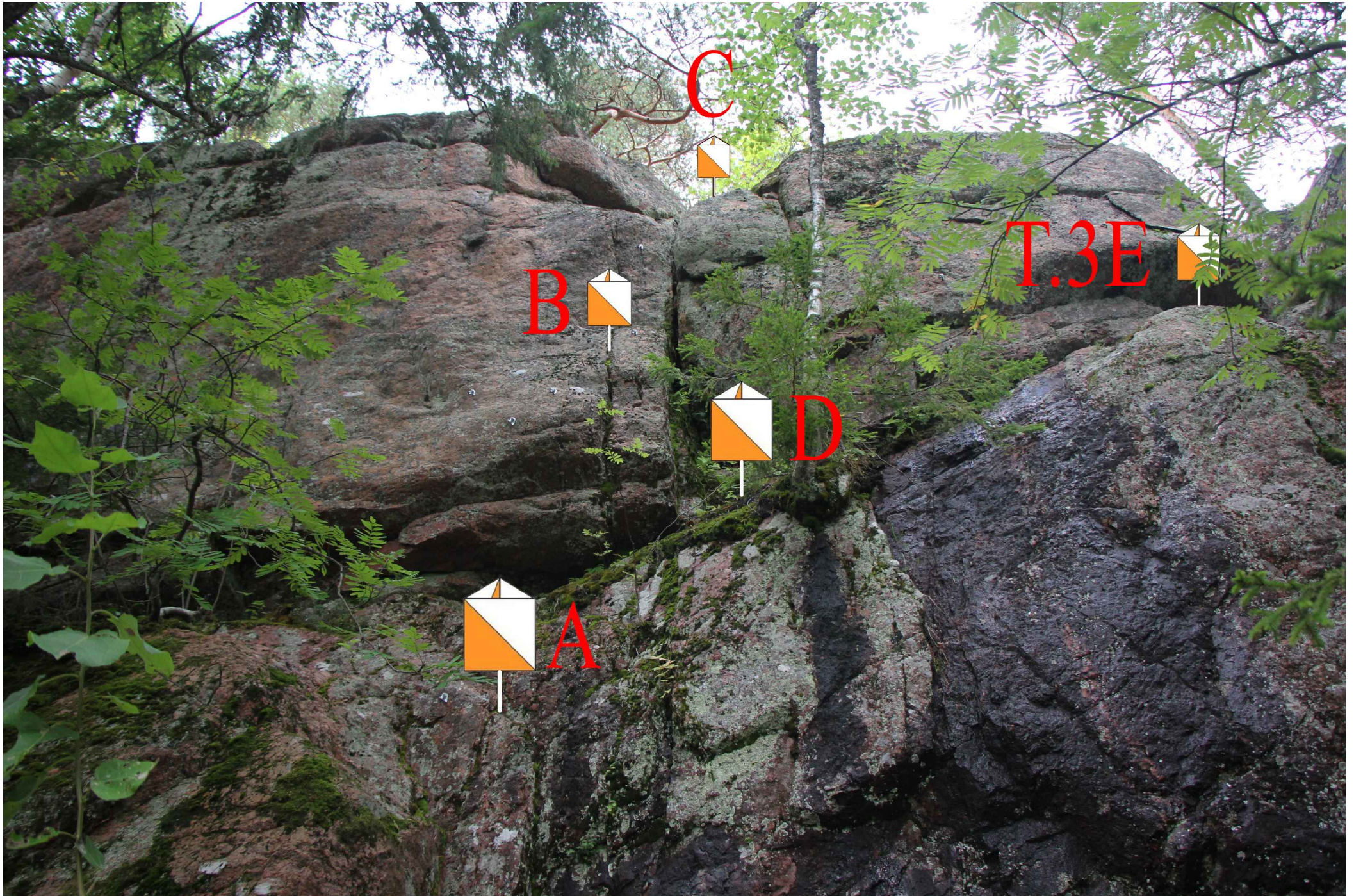
СТАНЦИЯ Т.2 / STATION T.2 / ESTACIÓN T.2:



СТАНЦИЯ Т.2 / STATION T.2 / ESTACIÓN T.2:



СТАНЦИЯ Т.3 / STATION T.3 / ESTACIÓN T.3:



СТАНЦИЯ Т.3 / STATION T.3 / ESTACIÓN T.3:

